



**JAPAN
SALES & LETTINGS
AGENCY**



Lynton Road, Acton W3

£6,300



4



2



1



C

**Council
Tax Band F**

For viewing requests, please email us.

Stunning Semi-Detached House in Acton – Modern Design with Spacious Interiors

This exceptional semi-detached house in Acton is available now, offering a unique blend of modern design and spacious living. Tailored for those who appreciate a refined lifestyle, it's perfect for families or professionals looking for an upscale living experience.

Key Features:

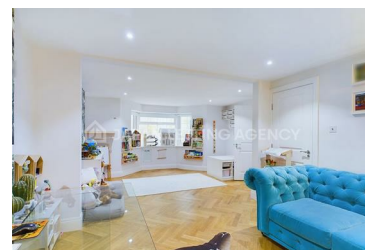
- Energy Performance Certificate (EPC): To Be Confirmed.
- Council: Ealing; Tax Band: F.
- Expansive living area covering 1776.05 sqft / 165 sqm.
- The house includes 3 bedrooms, 2 bathrooms, and a separate WC.
- 2 off-road parking spaces are available, complete with a Tesla charging pod.
- Available furnished or unfurnished, catering to the tenant's preference.
- Pets are considerable, offering flexibility for animal lovers.

Location Benefits:

- Conveniently located a 9-minute walk from Acton Main Line Station and a 14-minute walk from West Acton Underground Station, ensuring easy commuting.
- Sainsbury's Local Grocery Shops are just a 7-minute walk away, perfect for daily shopping needs.
- A range of cafes and restaurants can be reached within a 9-minute walk, providing great dining options.

Additional Perks:

- The property has been thoughtfully designed by the owner, featuring a modern aesthetic.
- It boasts a spacious dining and living room, a newly fitted kitchen, and a massive garden.



8 Station Parade, Uxbridge Road, London W5 3LD
+44 (0)20 8993 6100 | hello@japanlet.com | www.japanlet.com
JAPAN AT UK LIMITED t/a Japan Letting Agency

Ref: 18809207